

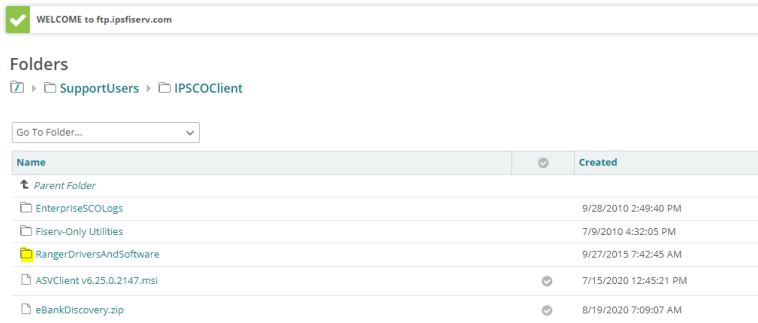
Installing a Check Scanner for Ultimate Deposit Direct (RDC)

UNINSTALL EXISTING DRIVER FOR SCANNER

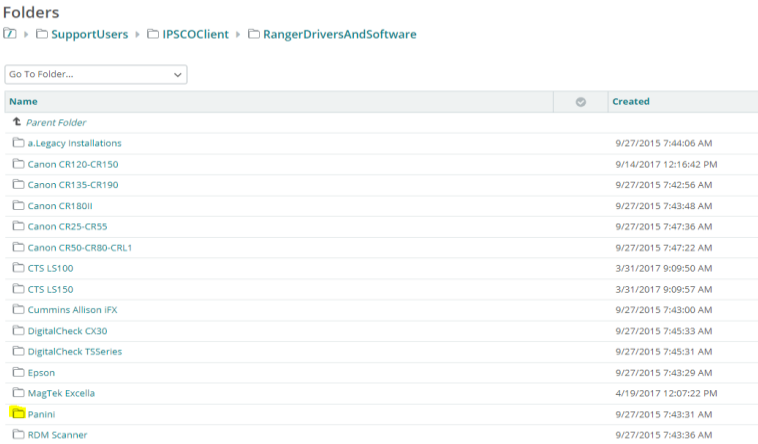
1. On your PC being used for making remote deposits, navigate to your Control Panel.
2. Select **Programs and Features**.
3. Identify your existing scanner driver from the list.
4. Right click on the existing driver and select **Uninstall/Change**.
5. Click **Uninstall**. You will need to have Administrative access to the PC to perform this function (If needed, contact your IT person/resource to assist with the driver download).

DOWNLOAD OF RANGER DRIVER FOR SCANNER

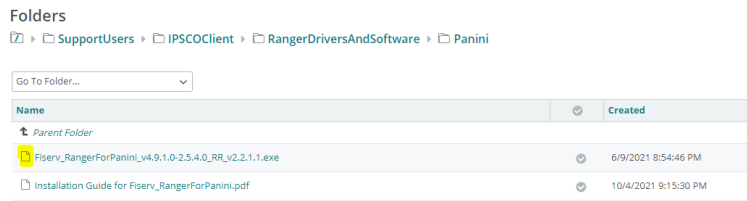
1. To begin the download process, Administrative access to the PC being used for making remote deposits is required (If needed, contact your IT person/resource to assist with the driver download).
2. To download driver software, follow these steps:
 - a. Use either the **Microsoft Edge** or **Google Chrome** browser.
 - b. Go to the Fiserv FTP website, <https://ftp.ipsfiserv.com>, to begin the download process.
 - c. Sign On using the following Username and Password:
 - i. **UserName:** ipscoclient
 - ii. **Password:** Ip\$co0628
 - d. Click on **RangerDriversAndSoftware** to open.



- e. Click on the **Panini** folder to open (choose other scanner manufacturer if different than Panini).



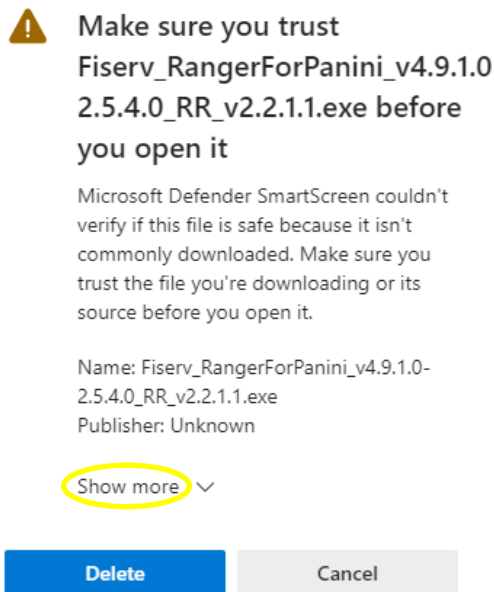
- f. Click on [Fiserv_RangerForPanini.exe](#) to download file (choose other scanner manufacturer if different than Panini).



- g. Click the [Download](#) button in the File Actions section.



- h. See Downloads Indicator box in the upper right-hand corner. Wait until the download is complete before proceeding to the next step.
- i. Once download is complete, a message will appear in the Downloads Indicator box. For a Panini scanner, *“Fiserv Ranger for Panini_v4.....exe isn’t commonly downloaded. Make sure you trust”* will be displayed.
- j. Hover over the Message and [right click](#). Select [Keep](#).
- k. A new window will display. Click the [Show More](#) button.

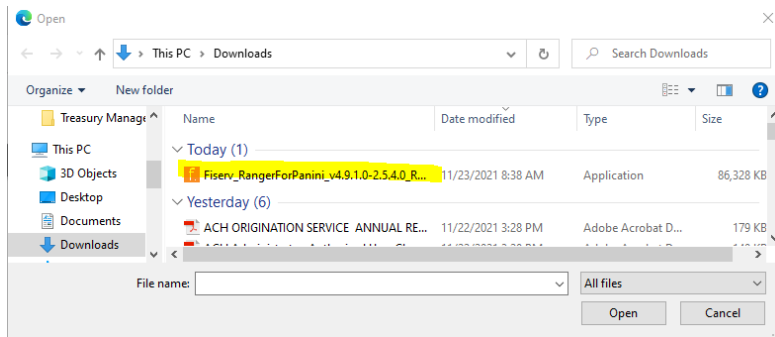


- l. Click on [Keep Anyway](#).

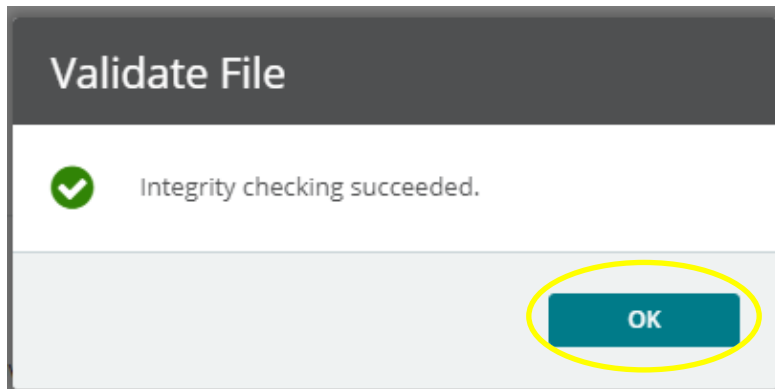
- m. At the bottom right-hand corner, click the **Check** button in the Validate Files window.



- n. Navigate to the Download folder
o. Select the recently downloaded **Panini file** (choose other scanner manufacturer if different than Panini).



- p. Click **Open**.
q. A Validate File window will appear. A message will display "Integrity checking succeeded". Click **OK**.



- r. You will return automatically to the Download screen. Select **RangerDriversAndSoftware**.



- s. Click on **x.Fiserv_RangerRemote** folder to open.

Name	Created
Parent Folder	
Legacy Installations	9/27/2015 7:44:06 AM
canon CR120-CR150	9/14/2017 12:16:42 PM
canon CR135-CR190	9/27/2015 7:42:56 AM
canon CR180ii	9/27/2015 7:43:48 AM
canon CR25-CR55	9/27/2015 7:47:36 AM
canon CR50-CR90-CRL1	9/27/2015 7:47:22 AM
CTS L5100	3/31/2017 9:09:50 AM
CTS L5150	3/31/2017 9:09:57 AM
Cummins Allison iFX	9/27/2015 7:43:00 AM
DigitalCheck CX30	9/27/2015 7:45:33 AM
DigitalCheck TSSeries	9/27/2015 7:45:31 AM
Epson	9/27/2015 7:43:29 AM
MagTek Excella	4/19/2017 12:07:22 PM
Panini	9/27/2015 7:43:31 AM
RDM Scanner	9/27/2015 7:43:36 AM
SmartSource Edge (Burroughs)	9/27/2015 7:47:30 AM
SmartSource Elite (Burroughs)	9/27/2015 7:44:03 AM
SmartSource Micro Elite	3/21/2018 10:37:42 PM
SmartSource Micro Elite SE	6/18/2017 7:17:51 PM
SmartSource MicroEX (Burroughs)	9/27/2015 7:43:43 AM
SmartSource PVA (Burroughs)	9/27/2015 7:44:00 AM
x.Fiserv_AdminNoScanner	9/27/2015 7:43:39 AM
x.Fiserv_RangerRemote	3/25/2017 6:32:03 PM

- t. Select **Fiserv_RangerRemote_SC.exe**.

Folders

SupportUsers > IPSCOClient > RangerDriversAndSoftware > x.Fiserv_RangerRemote

Go To Folder...

Name	Created
Parent Folder	
Fiserv_RangerRemote_SC.exe	9/14/2018 1:08:43 PM
Installation Guide for Fiserv_RangerRemote.pdf	10/4/2021 9:27:41 PM

- u. Click **Download** button in the File Actions section.

File Actions

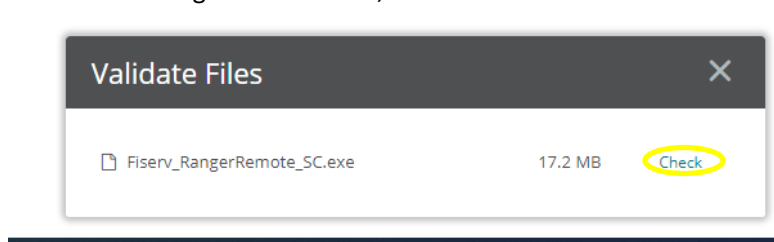
Download

File Information

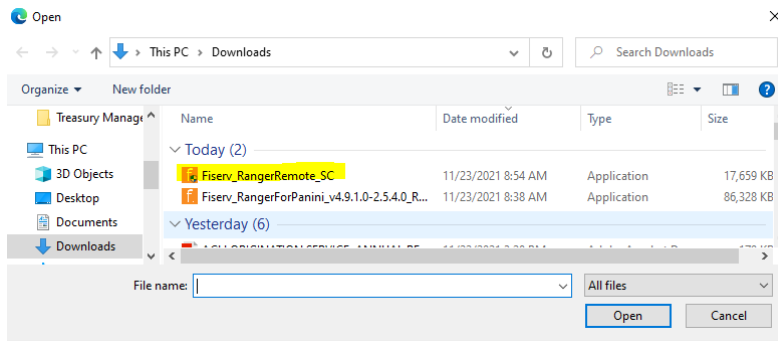
Uploaded by Steven Throne (steven.throne) at 9/14/2018 1:08:43 PM from (Hidden) via MOVEit Wizard Win 8.0.0.0

File Size: 18,082,304 bytes # of Downloads: 29465

- v. Wait until the download is complete before proceeding to the next step.
- w. At the bottom right-hand corner, Click the **Check** button in the Validate Files window.

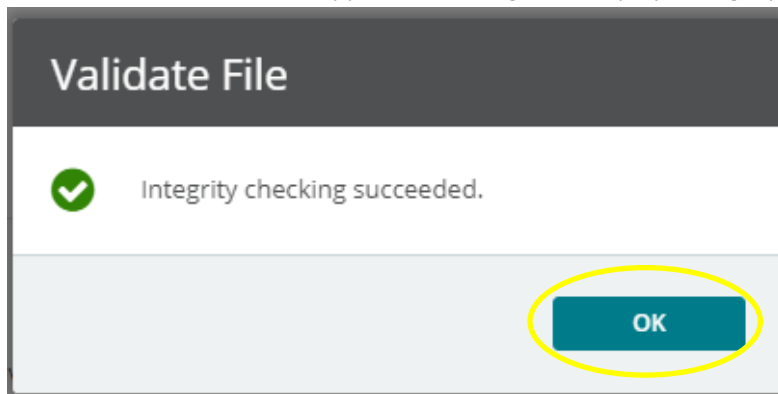


- x. Select the recently downloaded file.



- y. Click **Open**.

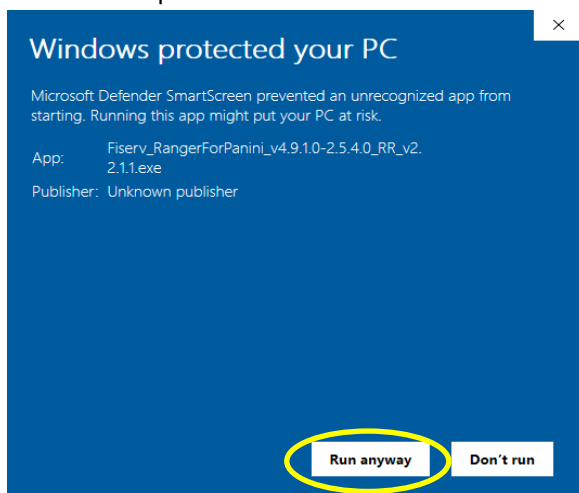
- z. A Validate File window will appear. A message will display “Integrity checking succeeded”. Click **OK**.



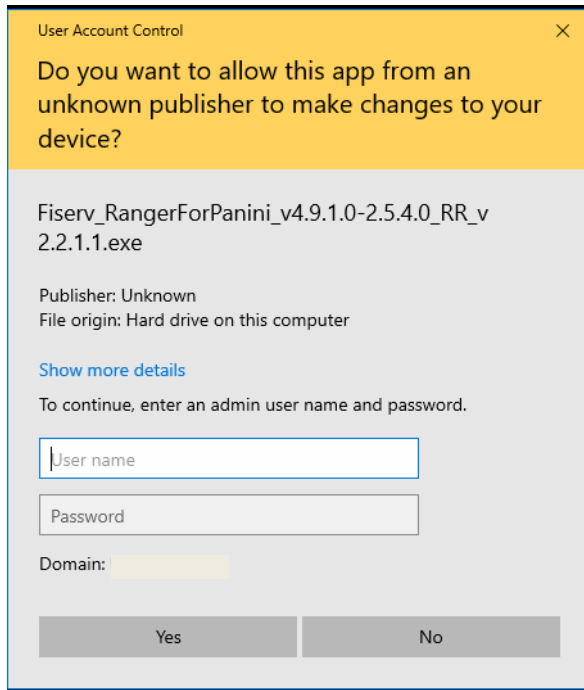
- aa. Click **OK**

INSTALLING SCANNER

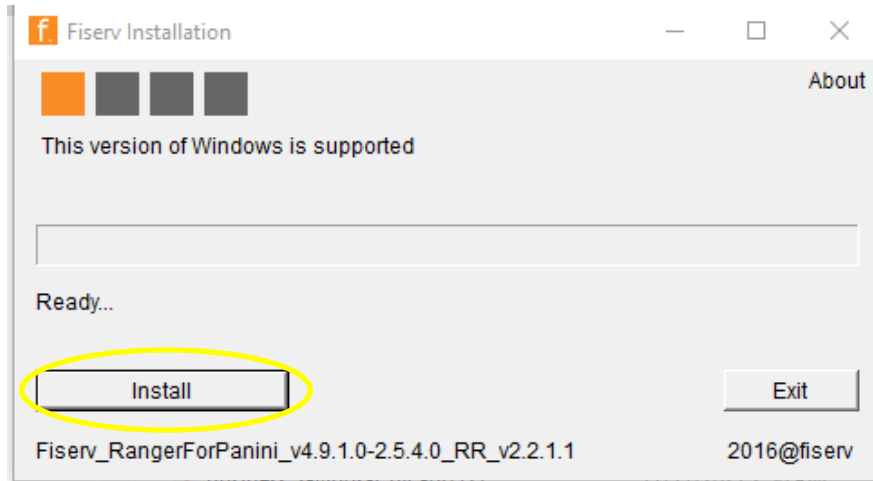
1. Before the install process is initiated, make sure scanner is NOT connected to the PC being used for making remote deposits.
2. Turn off anti-virus software if you can do so.
3. From the Downloads file, right click **RangerForPanini drivers** (or other scanner manufacturer if different than Panini) and click **Run as Administrator**.
4. If Windows opens a blue colored box for Microsoft Defender, click on **More Info** and click **Run Anyway**.



5. Input your Admin credentials in the box provided and click **Yes**.



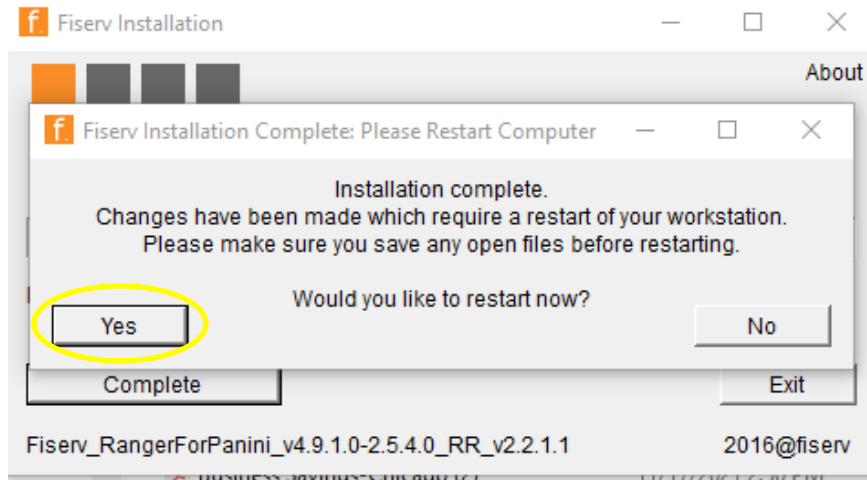
6. Click the **Install** button. This usually is completed in 10 minutes but can take up to 40 minutes.



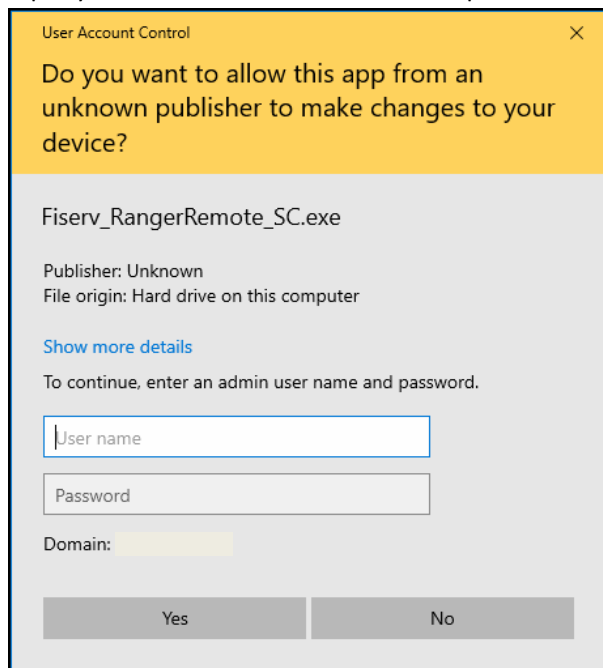
7. A window will appear to allow for Blocked Content. Click **Allow Blocked Content**.



- Close your browser window.
- An Installation Complete Message will appear. Click **Yes** to restart PC.



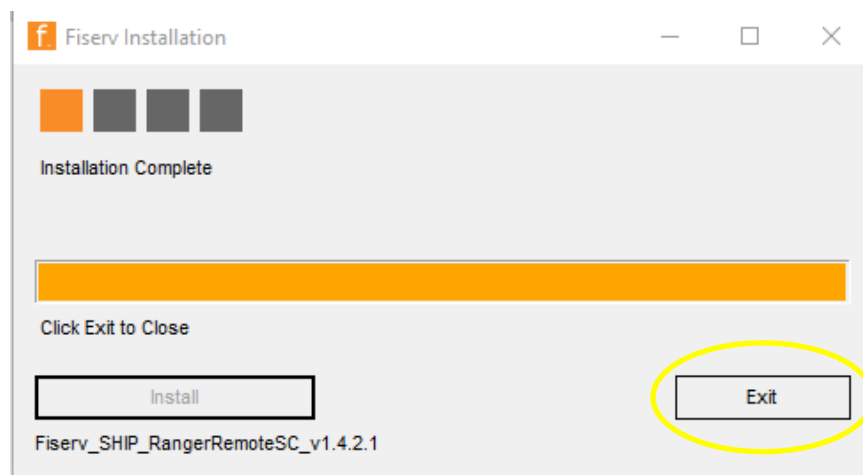
- From the Downloads file, right click **RangerRemote drivers** and click **Run as Administrator**, for use with **Microsoft Edge** or **Google Chrome**.
- Input your Admin credentials in the box provided and click **Yes**.



12. Click the **install** button.

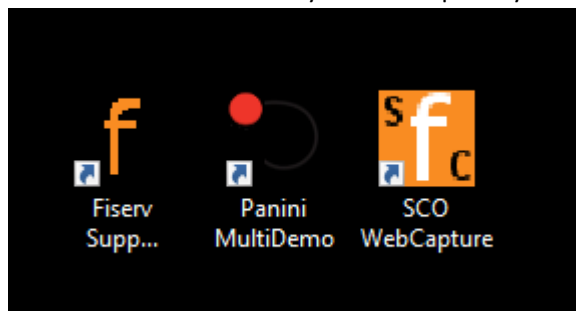


13. Click **Exit** to close.



14. Connect the scanner to the PC.

15. Delete these 3 icons from your desktop. They are not needed.



16. Search for **RangerFlex** and open file.

17. Test connection to scanner by scanning a check. This is just testing the scanner, no transaction occurs.

18. Quit **RangerFlex**.

19. Open **Microsoft Edge** or **Google Chrome** browser and go to bank website (<https://www.icb.biz>).

20. Click on **Ultimate Access Business Banking** in the middle of the page.

21. Login to **Ultimate Access Business Banking** using your sign on credentials.

22. Go to **Checks and Deposits** → **Deposit Checks** → **Create New Deposit**.